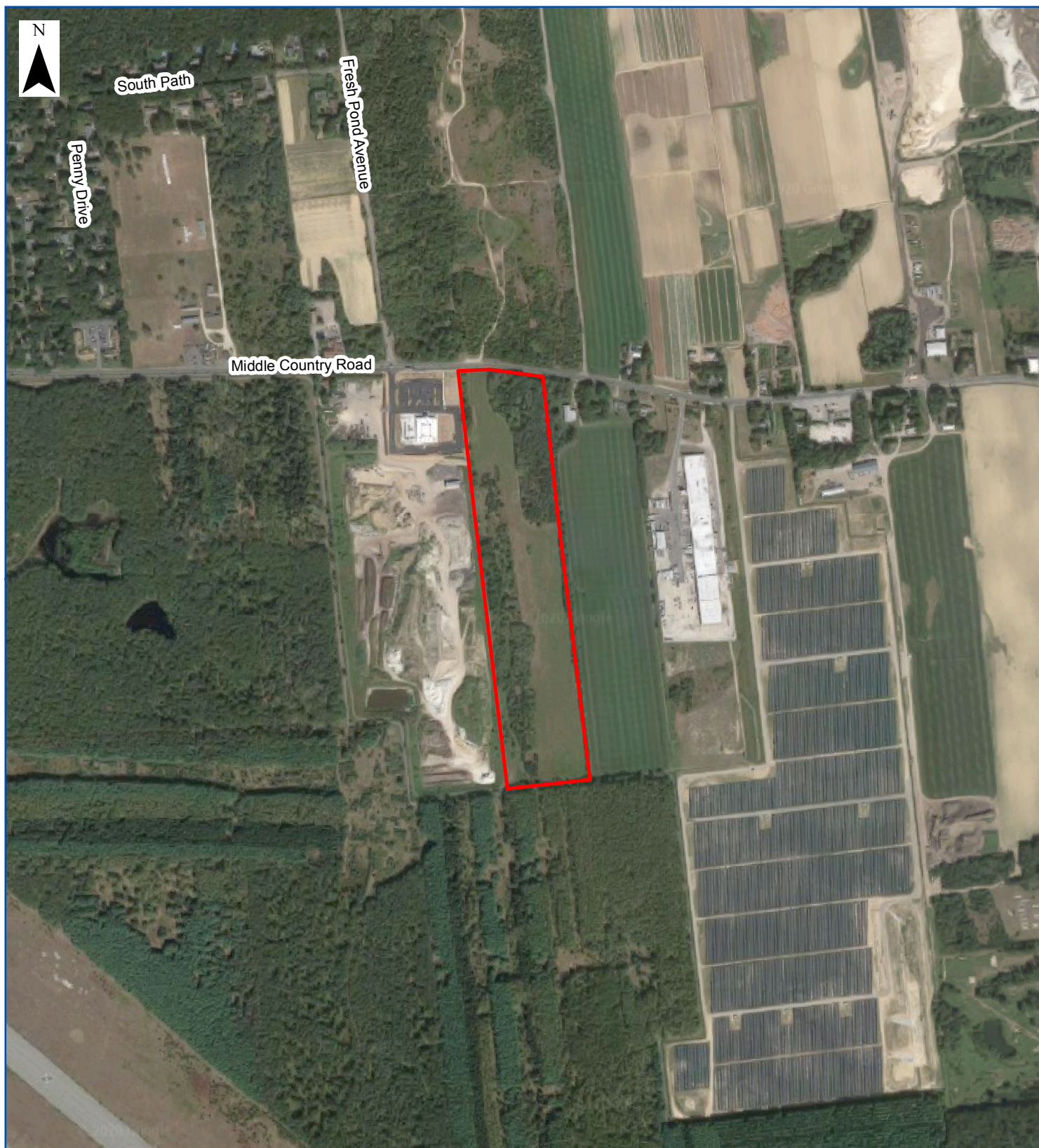


APPENDIX A

Figures

List of Figures

- Figure 1 - Site Location Map
- Figure 2 - Tax Map
- Figure 3 - Proposed Land Use Map, As Excerpted from Town Comprehensive Plan Update
- Figure 4 - Land Use Map
- Figure 5 - Zoning Map
- Figure 6 – Federal Opportunity Zone (Long Island Region) Map
- Figure 7 - Soil Survey Map
- Figure 8 – Agricultural and Farmland Protection Plan - Soils Map Town of Riverhead
- Figure 9 - USGS Topographic Map
- Figure 10 – Water Table Elevation Map
- Figure 11 – Hydrogeologic Zone Map
- Figure 12 – SGPA Plan Map
- Figure 13 – Wells Location Map
- Figure 14 – Suffolk County Sanitary Code - Article 6 Map
- Figure 15 – Suffolk County Sanitary Code - Article 7 Map
- Figure 16 – Subwatershed Map
- Figure 17 – Wetlands and Surface Waters Map
- Figure 18 – Peconic Estuary Program Study Area Boundaries Map
- Figure 19 – FEMA Flood Zone Map
- Figure 20 – Sea Level Rise Map
- Figure 21 – Publicly Accessible Views Map
- Figure 22 – EPCAL Walking Trail Map
- Figure 23 – Archaeologically Sensitive Areas Map
- Figure 24 – Map of Other Planned Developments



Site Boundary

Figure 1 - Site Location Map

4285 Middle Country Rd
Calverton, NY

0 500 1,000 1,500 2,000 Feet

Sources: 1. Aerial Imagery: Google Maps (Imagery Date: 9/19/2019). Retrieved on 12/21/2020. 2. Site boundary tax lot data: Suffolk County, NYS GIS Clearinghouse
Boundaries are approximate.

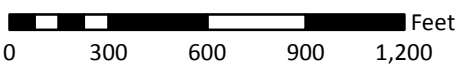
Document Path: W:\Projects\S-Z\TPO\2001\maps\SEQRA\FIG01_SiteLocation.mxd



Site Boundary



Tax Lot Boundary with Tax Lot Numbers



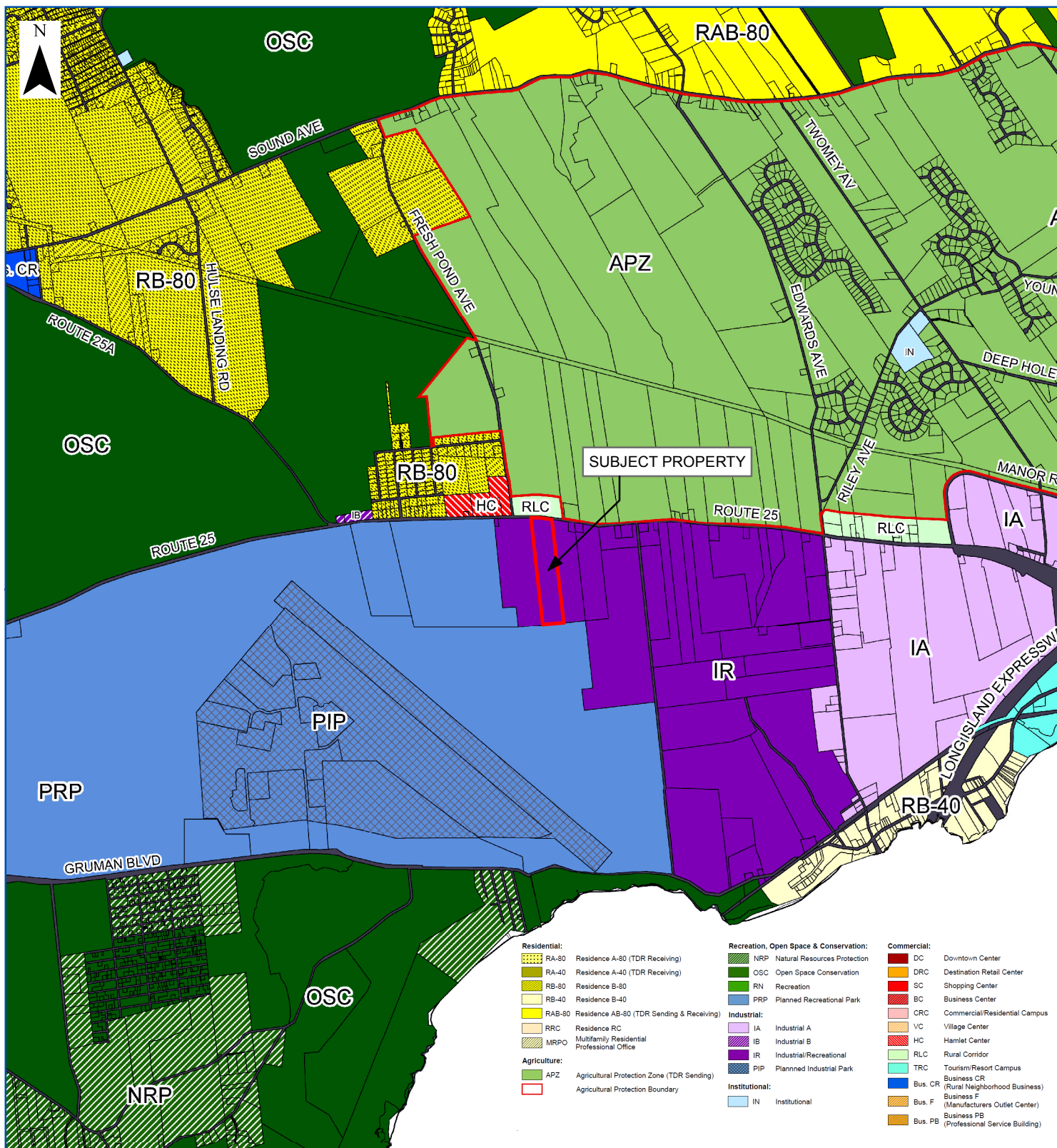
Sources: 1. Suffolk County Tax Parcel Data: NYS GIS Clearinghouse (data provided by Suffolk County)
Boundaries are approximate.

Document Path: W:\Projects\S-Z\TPO\2001\maps\SEQRA\FIG_TaxMap.mxd

Figure 2 - Tax Map

4285 Middle Country Rd
Calverton, NY






 Site Boundary

Figure 3 - Proposed Land Use Plan

4285 Middle Country Rd
Calverton, NY

 Miles

0 1/4 1/2 3/4 1
Sources: Town of Riverhead Proposed Land Use Plan: Town of Riverhead Planning Department, October 2003; Suffolk County Real Property Tax Service Agency, 2001 - 2003
Boundaries are approximate.

Document Path: W:\Projects\5-Z\TPO\2001\maps\SEQRA\FIG03_ProposedLandUse.mxd

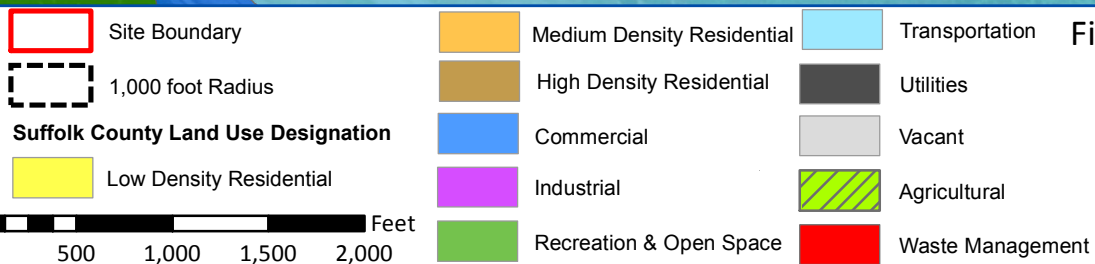


Figure 4 - Land Use Map

4285 Middle Country Rd
Calverton, NY

0 500 1,000 1,500 2,000 Feet

Sources: 1. ESRI Service Layer Credits: Source: Esri, DigitalGlobe, GeoEye, Earthstar Geographics, CNES/Airbus DS, USDA, USGS, AeroGRID, IGN, and the GIS User Community; 2. Suffolk County 2016 Land Use Dataset: Suffolk County Open Data Portal - dataset prepared by the Suffolk County Department of Economic Development and Planning
Boundaries are approximate.

Document Path: W:\Projects\S-Z\TPO\2001\maps\SEQRA\FIG_LandUseMap.mxd

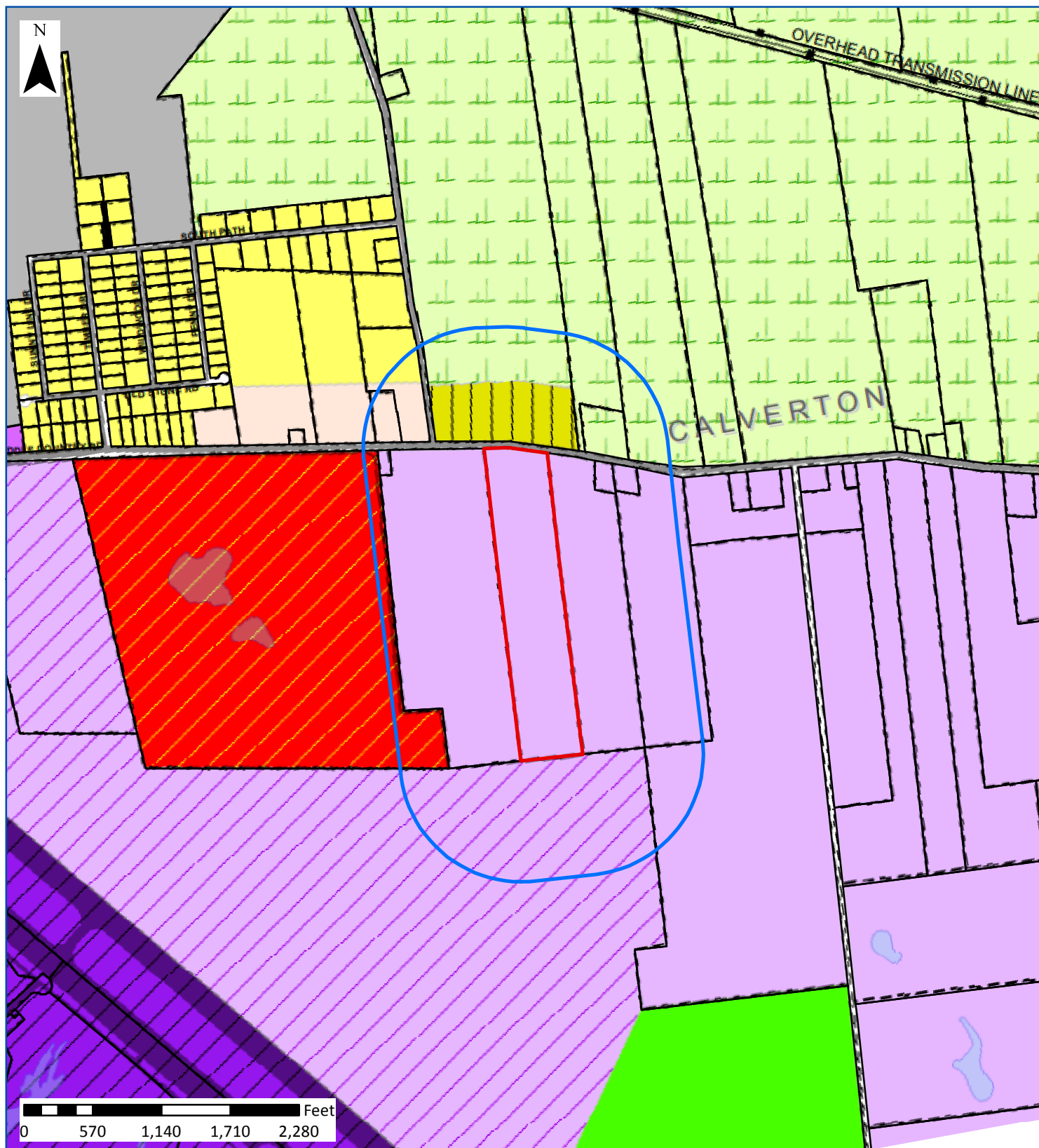
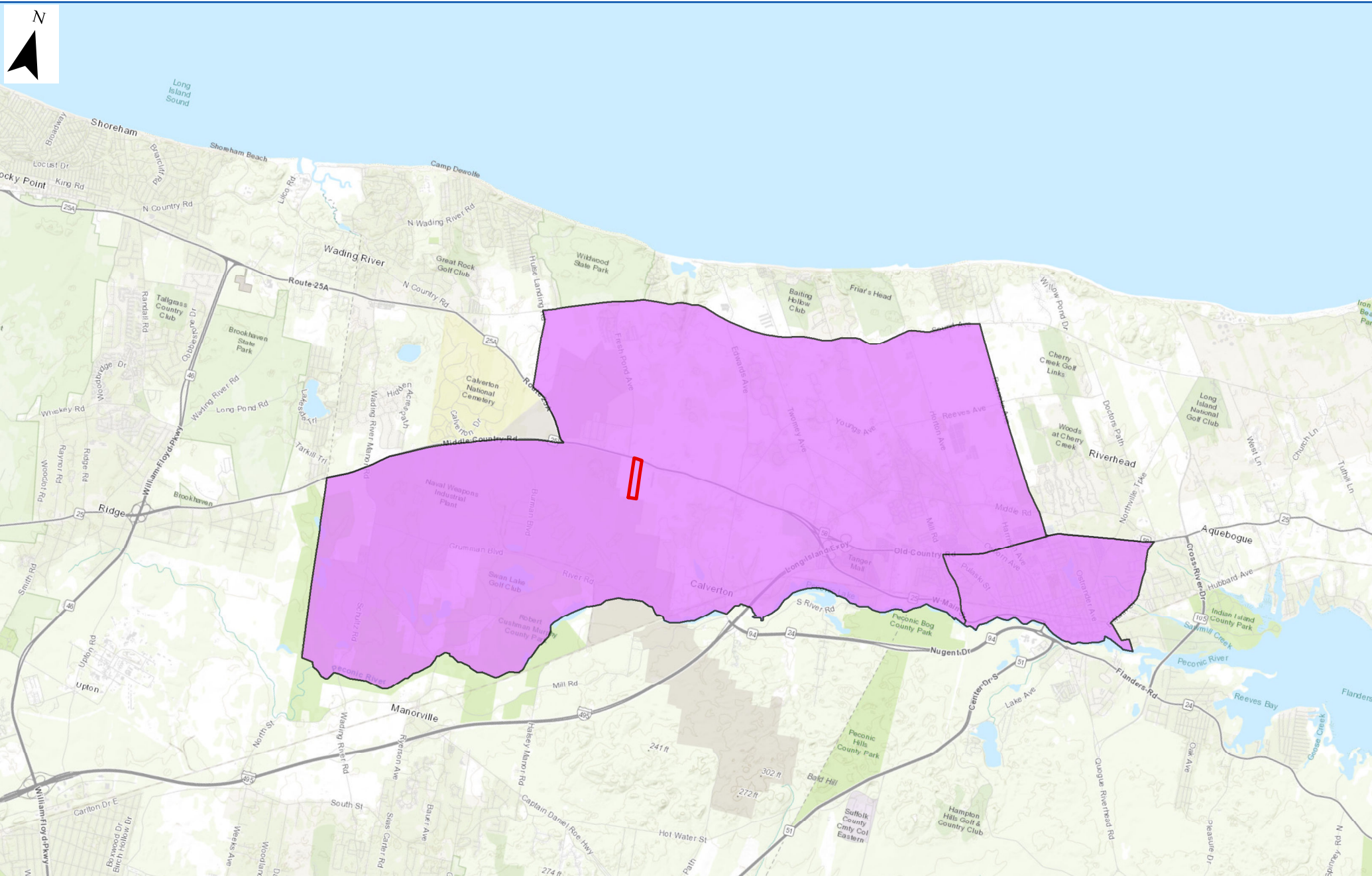

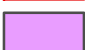


Figure 5 - Zoning Map

4285 Middle Country Rd
Calverton, NY

| | | | | | |
|--|-------------------|---|---------------------------------|---|---------------------------------|
|  | Water Bodies |  | (Ind C) Industrial C |  | (RA40) Residence A-40 |
|  | Property Lines |  | (LI) Light Industrial |  | (RB40) Residence B-40 |
|  | Asphalt |  | (CO) Calverton Office |  | (Def Ins) Defence Institutional |
|  | 1,000 ft Boundary |  | (PRP) Planned Recreational Park |  | (RC) Residence RC |
|  | Site Boundary |  | (APZ) Agricultural Protection |  | (PIP) Planned Industrial Park |



-  Site Boundary
-  Opportunity Zones

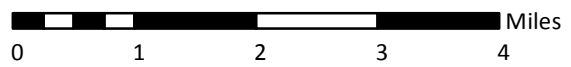


Figure 6 - Federal Opportunity Zone (Long Island Region) Map

4285 Middle Country Rd
Calverton, NY



P.W. Grosser Consulting, Inc.
630 Johnson Ave., Suite 7
Bohemia, NY 11716
Ph: 631-589-6353 • Fax: 631-589-8705
pwgc.info@pwgros.com

Source: 1. U.S. Department of Treasury Opportunity Zones Layer. U.S. Department of Treasury Urban Development (HUD). Last revised on November 16, 2020. <https://hudgis-hud.opendata.arcgis.com/datasets/opportunity-zones>;
2. Esri Service Layer Credits: Sources: Esri, HERE, Garmin, Intermap, increment P Corp., GEBCO, USGS, FAO, NPS, NRCAN, Geobase, IGN, Kadaster NL, Ordnance Survey, Esri Japan, METI, Esri China (Hong Kong), swisstopo, © OpenStreetMap contributors, and the GIS User Community
Boundaries are approximate.



MAP LEGEND

- Area of Interest (AOI)**
- Area of Interest (AOI)
- Soils**
- Soil Map Unit Polygons
 - Soil Map Unit Lines
 - Soil Map Unit Points
- Special Point Features**
- Blowout
 - Borrow Pit
 - Clay Spot
 - Closed Depression
 - Gravel Pit
 - Gravelly Spot
 - Landfill
 - Lava Flow
 - Marsh or swamp
 - Mine or Quarry
 - Miscellaneous Water
 - Perennial Water
 - Rock Outcrop
 - Saline Spot
 - Sandy Spot
 - Severely Eroded Spot
 - Sinkhole
 - Slide or Slip
 - Sodic Spot
- Water Features**
- Streams and Canals
- Transportation**
- Rails
 - Interstate Highways
 - US Routes
 - Major Roads
 - Local Roads
- Background**
- Aerial Photography
- Other Features**
- Spoil Area
 - Stony Spot
 - Very Stony Spot
 - Wet Spot
 - Other
 - Special Line Features

MAP INFORMATION

The soil surveys that comprise your AOI were mapped at 1:20,000.

Warning: Soil Map may not be valid at this scale.

Enlargement of maps beyond the scale of mapping can cause misunderstanding of the detail of mapping and accuracy of soil line placement. The maps do not show the small areas of contrasting soils that could have been shown at a more detailed scale.

Please rely on the bar scale on each map sheet for map measurements.

Source of Map: Natural Resources Conservation Service
Web Soil Survey URL:
Coordinate System: Web Mercator (EPSG:3857)

Maps from the Web Soil Survey are based on the Web Mercator projection, which preserves direction and shape but distorts distance and area. A projection that preserves area, such as the Albers equal-area conic projection, should be used if more accurate calculations of distance or area are required.

This product is generated from the USDA-NRCS certified data as of the version date(s) listed below.

Soil Survey Area: Suffolk County, New York
Survey Area Data: Version 18, Jun 11, 2020

Soil map units are labeled (as space allows) for map scales 1:50,000 or larger.

Date(s) aerial images were photographed: Oct 23, 2019—Nov 4, 2019

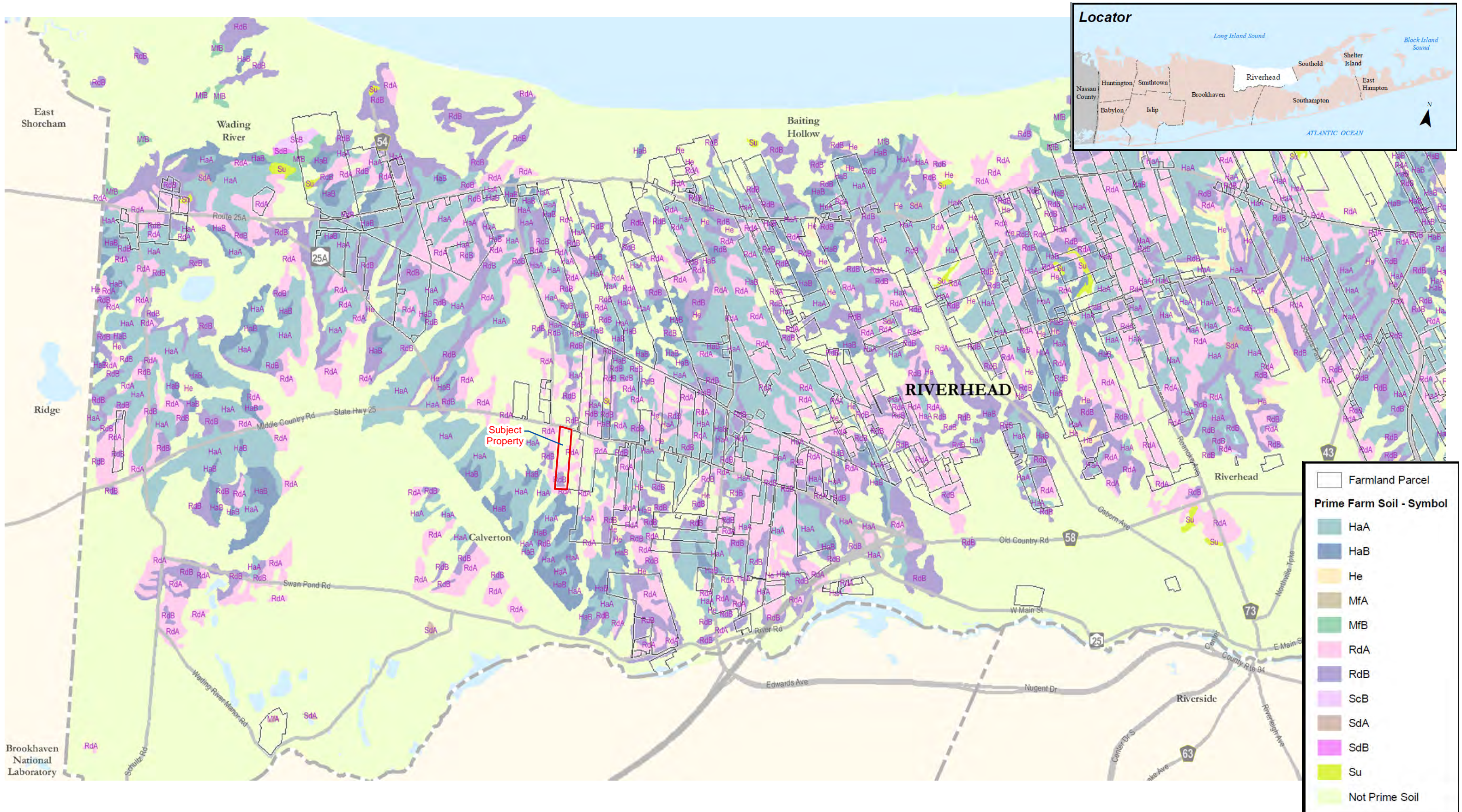
The orthophoto or other base map on which the soil lines were compiled and digitized probably differs from the background imagery displayed on these maps. As a result, some minor shifting of map unit boundaries may be evident.

| Map Unit Symbol | Map Unit Name | Acres in AOI | Percent of AOI |
|-----------------------------|--|--------------|----------------|
| PIA | Plymouth loamy sand, 0 to 3 percent slopes | 5.1 | 16.9% |
| PIB | Plymouth loamy sand, 3 to 8 percent slopes | 9.3 | 30.7% |
| PmB3 | Plymouth gravelly loamy sand, 3 to 8 percent slopes, eroded | 2.3 | 7.7% |
| PmC3 | Plymouth gravelly loamy sand, 8 to 15 percent slopes, eroded | 0.6 | 2.1% |
| RdA | Riverhead sandy loam, 0 to 3 percent slopes | 8.0 | 26.6% |
| RdB | Riverhead sandy loam, 3 to 8 percent slopes | 4.8 | 16.0% |
| Totals for Area of Interest | | 30.3 | 100.0% |

Figure 7 - Soil Survey Map

4285 Middle Country Rd
Calverton, NY

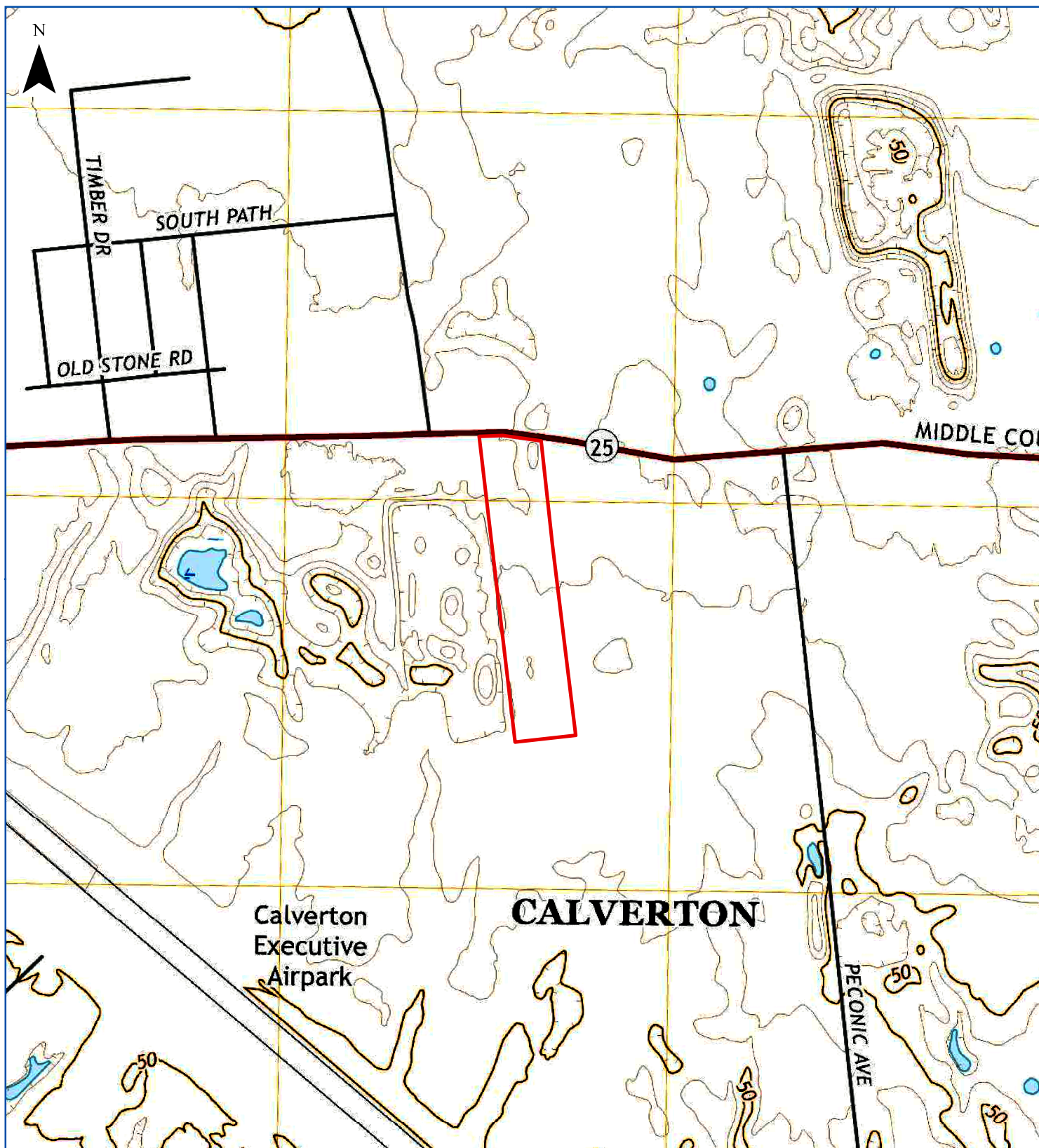




Site Boundary

Figure 8 - Agricultural and Farmland Protection Plan - Soils Map
Town of Riverhead


4285 Middle Country Rd
Calverton, NY



 Site Boundary

Figure 9 - USGS Topographic Map

4285 Middle Country Rd
Calverton, NY

 Feet
0 580 1,160 1,740 2,320

Sources: 1. Topographic map: USGS NATIONAL MAP VIEWER: <http://viewer.nationalmap.gov/viewer>
USGS US Topo 7.5-minute map for Wading River, NY 2019. Published Date: 2019-07-01;
2. Suffolk County Tax Parcel Data: NYS GIS Clearinghouse (data provided by Suffolk County)
Boundaries are approximate.

Document Path: W:\Projects\S-Z\TPO\2001\maps\SEQRA\FIG_USGS_Topo.mxd



— Approximately Known Groundwater Contour
 Site Boundary

- - - Inferred Groundwater Contour

0 0.75 1.5 2.25 3 Miles

Sources: 1. EService Layer Credits: Source: Esri, DigitalGlobe, GeoEye, Earthstar Geographics, CNES/Airbus DS, USDA, USGS, AeroGRID, IGN, and the GIS User Community; 2. 2016 Water Table Contours: USGS - Finkelstein, J.S., and Como, M.D., 2018, Geospatial dataset of water-table and potentiometric-surface altitudes in the upper glacial, Magothy, and Lloyd aquifers of Long Island, New York, April–May 2016: U.S. Geological Survey data release, <https://doi.org/10.5066/F7G15Z9T>; 3. Suffolk County Tax Parcel Data: NYS GIS Clearinghouse (data provided by Suffolk County)

Figure 10 - Water Table Elevation Map

4285 Middle Country Rd
 Calverton, NY



PWGC

CLIENT DRIVEN SOLUTIONS

P.W. Grosser Consulting, Inc.

630 Johnson Ave., Suite 7
 Bohemia, NY 11716
 Ph: 631-589-6353 • Fax: 631-589-8705
pwgc.info@pwgrosser.com



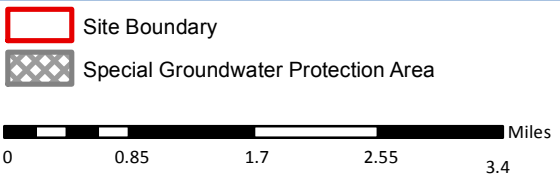
Figure 11 - Hydrogeologic Zones Map

4285 Middle Country Rd
Calverton, NY



PWGC
CLIENT DRIVEN SOLUTIONS
P.W. Grosser Consulting, Inc.
630 Johnson Ave., Suite 7
Bohemia, NY 11716
Ph: 631-589-6353 • Fax: 631-589-8705
pwgc.info@pwgrosser.com

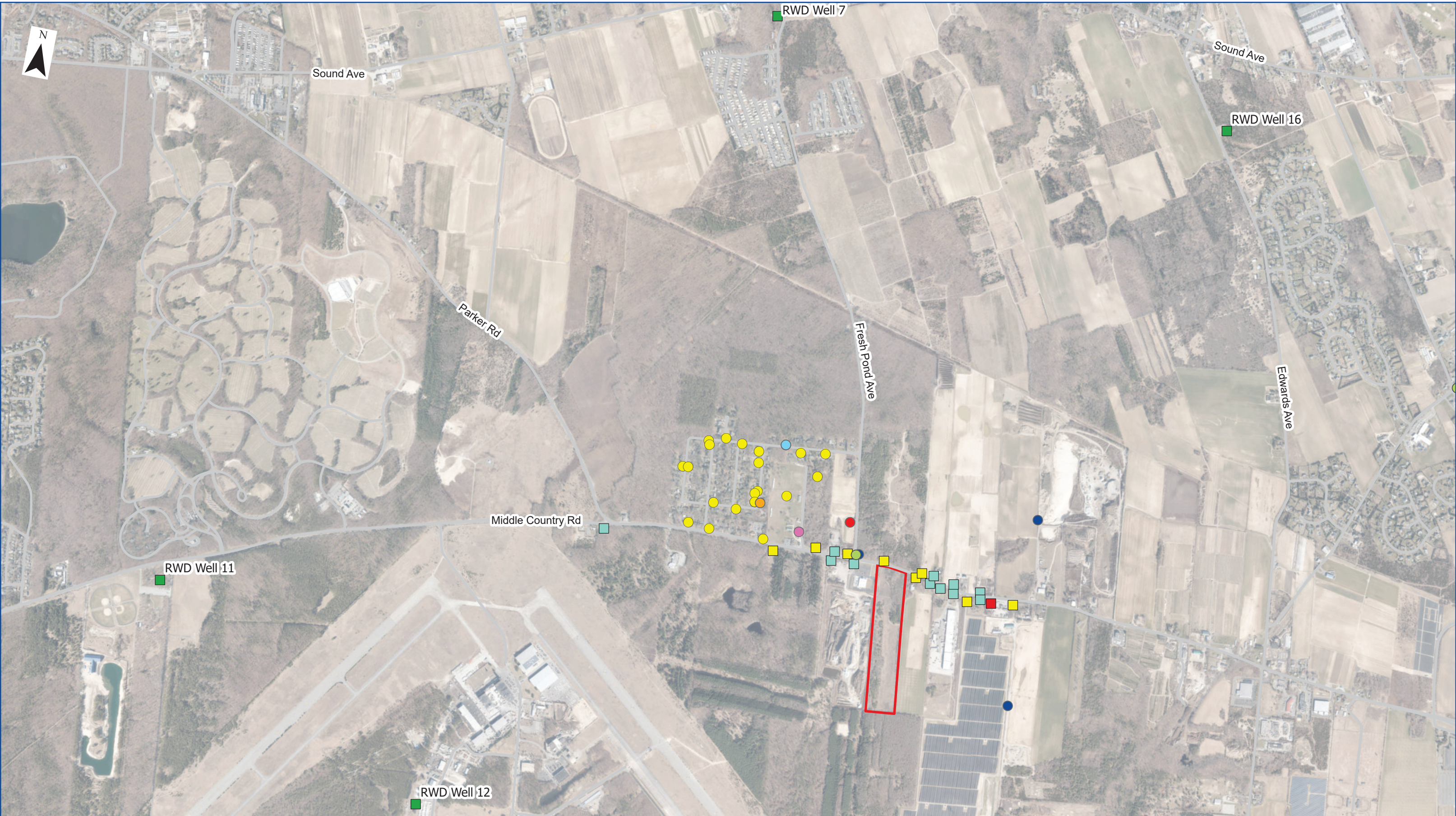
Source: 1. Suffolk County Hydrogeologic Zones Map; Suffolk County Department of Economic Development & Planning, Division of Planning & Environment; NYS Office of Information Technology Services



Source: 1. Special Groundwater Protection Area Map: Suffolk County Department of Economic Development & Planning, Division of Planning & Environment; NYS Office of Information Technology Services. 2. Suffolk County Tax Parcel Data: NYS GIS Clearinghouse (data provided by Suffolk County). Boundaries are approximate.

Figure 12 - Special Groundwater Protection Area Map
4285 Middle Country Rd
Calverton, NY

P.W. Grosser Consulting, Inc.
630 Johnson Ave., Suite 7
Bohemia, NY 11716
Ph: 631-589-6353 • Fax: 631-589-8705
pwgc.info@pwgros.com



Site Boundary

USGS Monitoring Well - Active

USGS Monitoring Well - Inactive

Domestic Well

Domestic Well, Well Location on Site Unknown

General Purpose Well, Well Location on Site Unknown

Use of Well Unknown

Test Well

Lot Connected to Public Water

Public Water Available - Lot Not Connected

No Public Water Available for Lot

Riverhead Water District Well

01,0002,0003,0004,000Feet

Represent data from NYSDEC FOIL Request


Represent data from Riverhead Water District

Source: 1. Private well locations were determined in coordination with the NYSDEC and RWD; 2. USGS well locations from Phase 1 ESA; 3. Suffolk County Tax Parcel Data: NYS GIS Clearinghouse (data provided by Suffolk County); 4. EService Layer Credits: World Imagery: USDA FSA, GeoEye, Maxar.
Boundaries are approximate.

Document Path: W:\Projects\S-Z\TPO\2001\maps\VicinityMap_wells\VicinityMap_wells.aprx

Figure 13 - Well Location Map

4285 Middle Country Rd
Calverton, NY



CLIENT DRIVEN SOLUTIONS

P.W. Grosser Consulting, Inc.

630 Johnson Ave., Suite 7
Bohemia, NY 11716
Ph: 631-589-6353 • Fax: 631-589-8705
pwgc.info@pwgros.com



Figure 14 - Suffolk County
Sanitary Code - Article 6 Map

4285 Middle Country Rd
Calverton, NY



PWGC
CLIENT DRIVEN SOLUTIONS
P.W. Grosser Consulting, Inc.
630 Johnson Ave., Suite 7
Bohemia, NY 11716
Ph: 631-589-6353 • Fax: 631-589-8705
pwgc.info@pwgrosser.com

Source: 1. Suffolk County Sanitary Code - Article 6 Map; Suffolk County Department of Economic Development & Planning, Division of Planning & Environment; Suffolk County Department of Health Services; NYS Office of Information Technology Services.

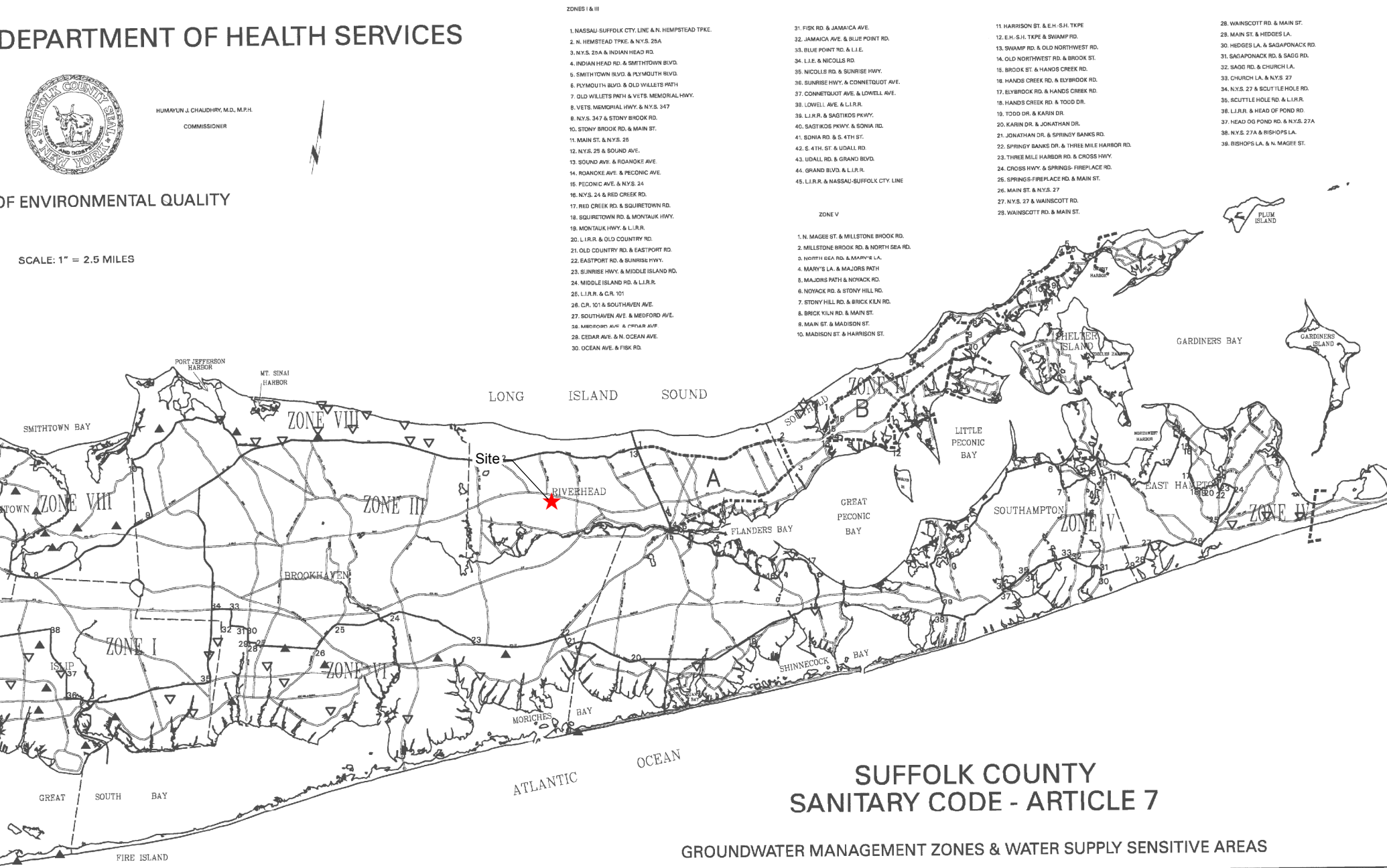
DEPARTMENT OF HEALTH SERVICES



HUMANJUN J. CHAUDHRY, M.D., M.P.H.
COMMISSIONER

OF ENVIRONMENTAL QUALITY

SCALE: 1" = 2.5 MILES



GROUNDWATER MANAGEMENT ZONES
DEEP RECHARGE AREAS ARE ZONES I, II, III & V (SECT. 703D, & 706) -
INCLUDES ALL PROPERTIES THAT FRONT ON THE BOUNDARY

WATER SUPPLY SENSITIVE AREAS
(SECT. 703 W. & 706)

----- AREAS SEPARATED FROM A LARGER REGIONAL GROUNDWATER SYSTEM
(INCLUDES: FIRE ISLAND, SHELTER ISLAND, FISHERS ISLAND, GILGO / OAK BEACH)

----- WATER BUDGET AREA OF THE NORTH FORK

▲ WELLFIELD OUTSIDE OF DEEP RECHARGE AREA OR OTHER
WATER SUPPLY SENSITIVE AREA

▽ WELLFIELD WITH UPPER GLACIAL WELL(S)
RESTRICTED AREA - 1500 FEET UPGRADIENT
500 FEET DOWNGRADIENT

0 3 6 9 12 Miles

Source: 1. Suffolk County Sanitary Code - Article 7 Map: Suffolk County Department of Health Services Division of Environmental Quality

Document Path: W:\Projects\S-Z\TPO\2001\maps\SEQRA\FIG_Article7_Map.mxd

GROUNDWATER MANAGEMENT ZONES & WATER SUPPLY SENSITIVE AREAS

Figure 15 - Suffolk County
Sanitary Code - Article 7 Map

4285 Middle Country Rd
Calverton, NY

P.W. Grosser Consulting, Inc.

630 Johnson Ave., Suite 7
Bohemia, NY 11716
Ph: 631-589-6353 • Fax: 631-589-8705
pwgc.info@pwgrosser.com

| Land Use | No. of Parcels |
|-------------------------------|-------------------|
| Low Density Residential | 56 |
| Medium Density Residential | 95 |
| High Density Residential | 11 |
| Commercial | 16 |
| Institutional | 2 |
| Recreation & Open Space | 167 |
| Agriculture | 24 |
| Vacant | 58 |
| Transportation | 15 |
| Utilities | 8 |
| Industrial | 3 |
| Waste Handling and Management | 2 |
| Surface Water | 16 |
| Total | 473 |

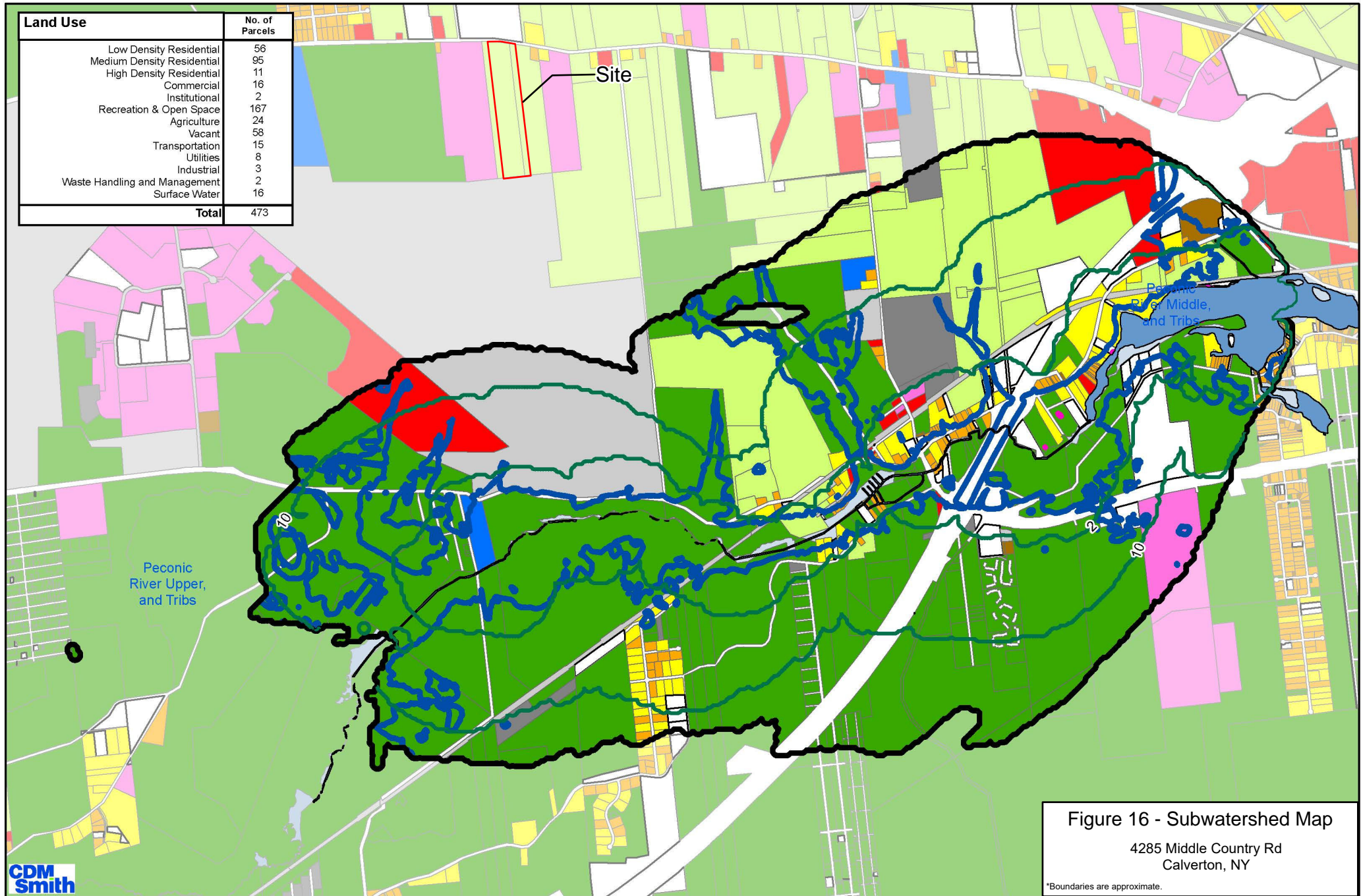


Figure 16 - Subwatershed Map

4285 Middle Country Rd
Calverton, NY

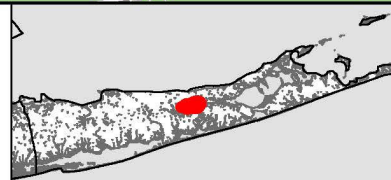
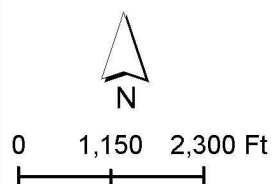
*Boundaries are approximate.



Land Use (Suffolk County Department of Planning
and Economic Development Land Use, 2016)

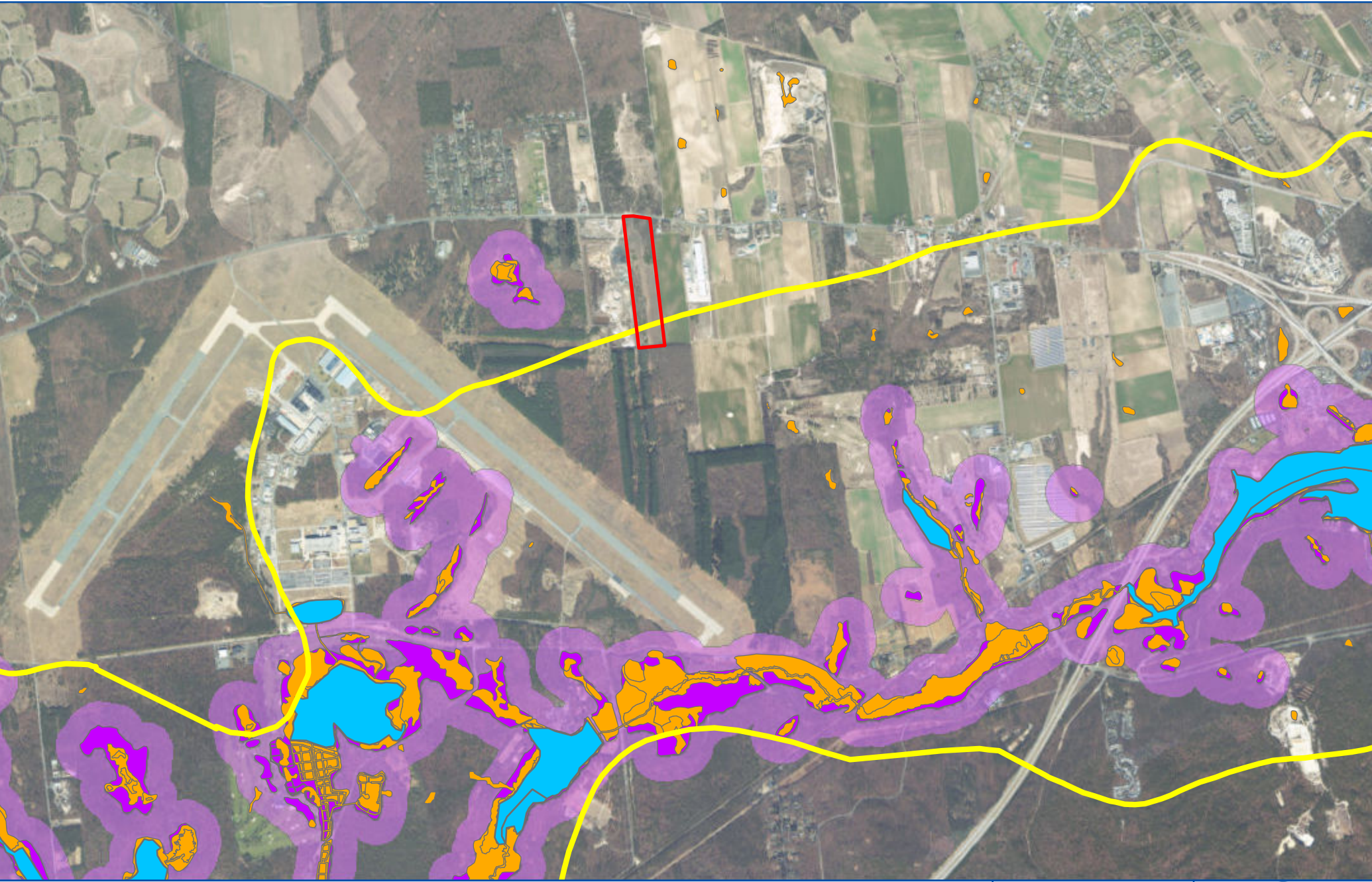
| | |
|----------------------------|-------------------------------|
| Low Density Residential | Recreation and Open Space |
| Medium Density Residential | Agricultural |
| High Density Residential | Vacant |
| Commercial | Transportation |
| Industrial | Utilities |
| Institutional | Waste Handling and Management |

| |
|--|
| 25 year Groundwater Contributing Area |
| 2/10 year Groundwater Contributing Area |
| Depth to Water (ft) |
| Less than or Equal to 10 feet |
| SLOSH Zones |



Subwatershed Planning Criteria
1701-0261+0262+0269
Peconic River Middle, and
Tribes

September 2018



Sources: Aerial basemap: Esri, DigitalGlobe, GeoEye, Earthstar Geographics, CNES/Airbus DS, USDA, USGS, AeroGRID, IGN, and the GIS User Community. National Wetlands Inventory shapefile: National Wetlands Inventory. New York State Regulatory Freshwater Wetlands shapefile: New York State Department of Environmental Conservation, NYS GIS Association, Suffolk County Open Data. Surface Water Bodies shapefile: NYS GIS Association. Peconic Estuary Watershed Boundary shapefile: U.S. EPA, DATA.GOV. Boundaries are approximate.

Document Path: W:\Projects\5-Z\TPO\2001\maps\FIG_Wetlands_v3.mxd

Figure 17 - Wetlands
& Surface Waters
Map

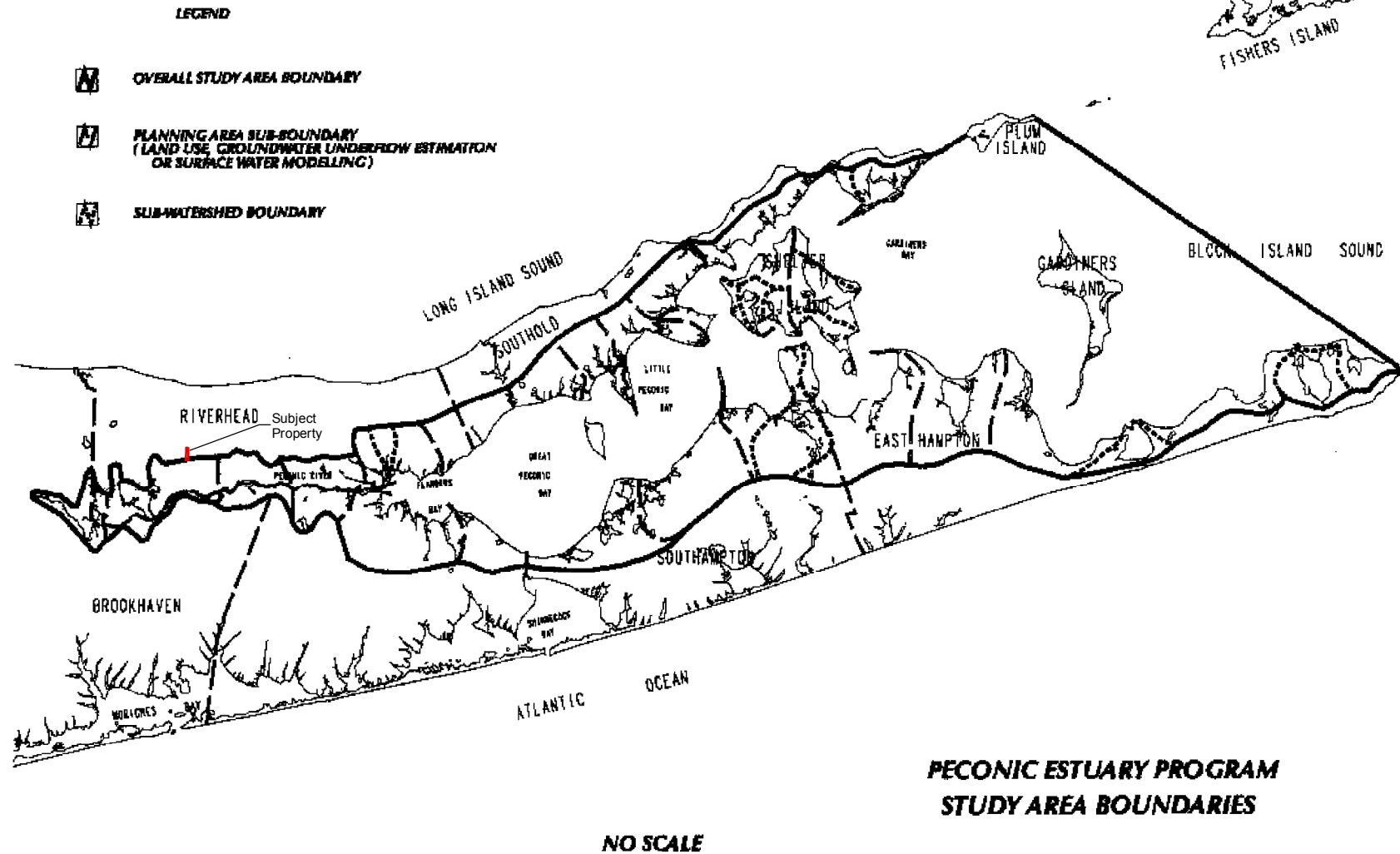
4285 Middle Country Rd
Calverton, NY



PWGC
CLIENT DRIVEN SOLUTIONS
P.W. Grosser Consulting, Inc.

630 Johnson Ave., Suite 7
Bohemia, NY 11716
Ph: 631-589-6353 • Fax: 631-589-8705
pwgc.info@pwgrosser.com

**SUFFOLK COUNTY DEPARTMENT OF HEALTH SERVICES
DIVISION OF ENVIRONMENTAL QUALITY
OFFICE OF ECOLOGY**



 Site Boundary

Figure 18 - Peconic Estuary
Program Study Area Boundaries
Map

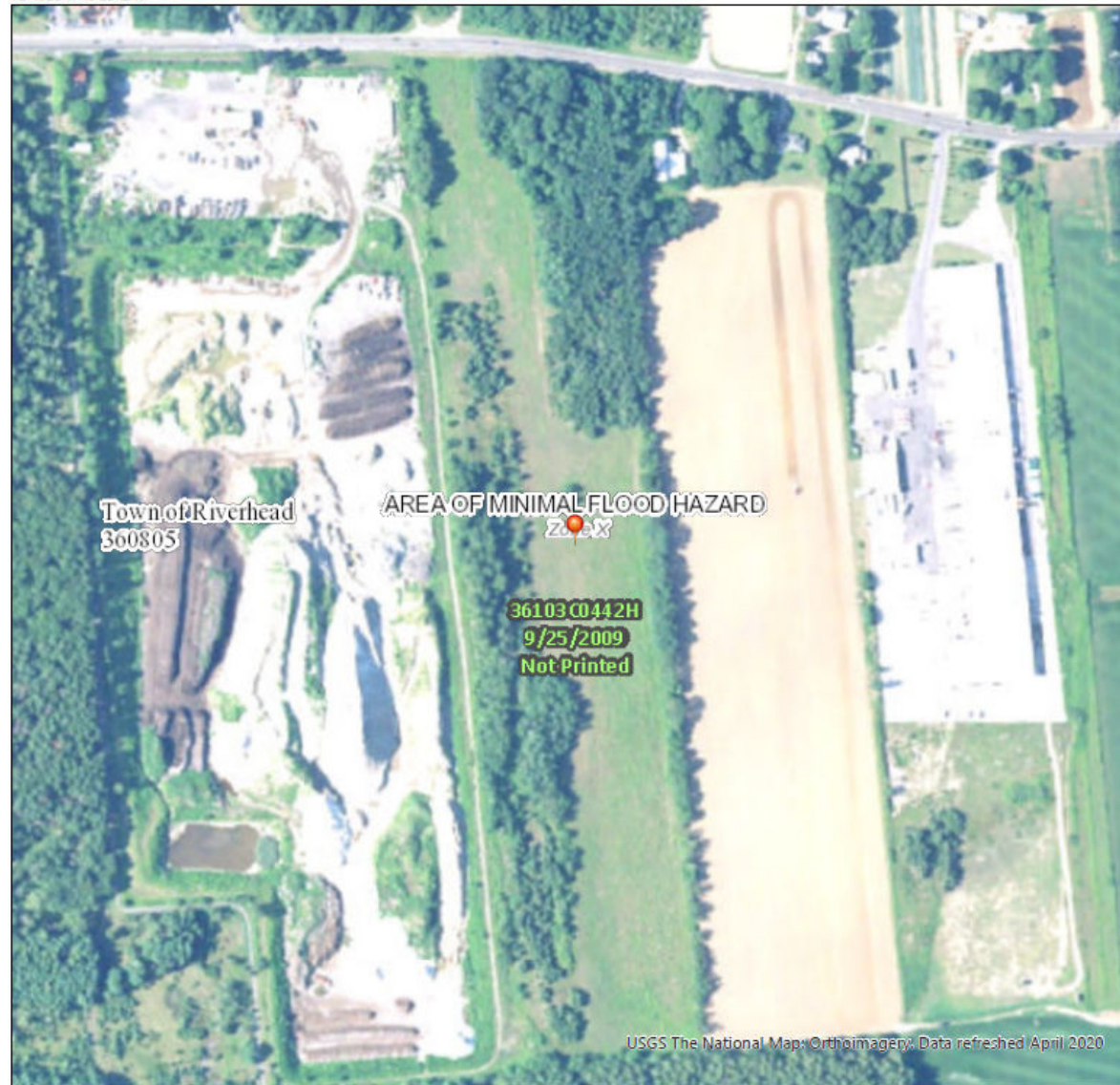
4285 Middle Country Rd
Calverton, NY



National Flood Hazard Layer FIRMette



72°46'36"W 40°55'43"N



Legend

SEE FIS REPORT FOR DETAILED LEGEND AND INDEX MAP FOR FIRM PANEL LAYOUT

| | | |
|-----------------------------|--|---|
| SPECIAL FLOOD HAZARD AREAS | | Without Base Flood Elevation (BFE) Zone A, V, AE99 |
| | | With BFE or Depth Zone AE, AO, AH, VE, AR |
| | | Regulatory Floodway |
| OTHER AREAS OF FLOOD HAZARD | | 0.2% Annual Chance Flood Hazard, Areas of 1% annual chance flood with average depth less than one foot or with drainage areas of less than one square mile Zone X |
| | | Future Conditions 1% Annual Chance Flood Hazard Zone X |
| | | Area with Reduced Flood Risk due to Levee. See Notes. Zone X |
| | | Area with Flood Risk due to Levee Zone D |
| OTHER AREAS | | NO SCREEN Area of Minimal Flood Hazard Zone X |
| | | Effective LOMRs |
| GENERAL STRUCTURES | | Area of Undetermined Flood Hazard Zone D |
| | | Channel, Culvert, or Storm Sewer |
| OTHER FEATURES | | Levee, Dike, or Floodwall |
| | | Cross Sections with 1% Annual Chance Water Surface Elevation |
| MAP PANELS | | Coastal Transect |
| | | Base Flood Elevation Line (BFE) |
| OTHER FEATURES | | Limit of Study |
| | | Jurisdiction Boundary |
| OTHER FEATURES | | Coastal Transect Baseline |
| | | Profile Baseline |
| OTHER FEATURES | | Hydrographic Feature |
| | | Digital Data Available |
| MAP PANELS | | No Digital Data Available |
| | | Unmapped |

This map complies with FEMA's standards for the use of digital flood maps if it is not void as described below. The basemap shown complies with FEMA's basemap accuracy standards.

The flood hazard information is derived directly from the authoritative NFHL web services provided by FEMA. This map was exported on 9/18/2020 at 9:06 AM and does not reflect changes or amendments subsequent to this date and time. The NFHL and effective information may change or become superseded by new data over time.

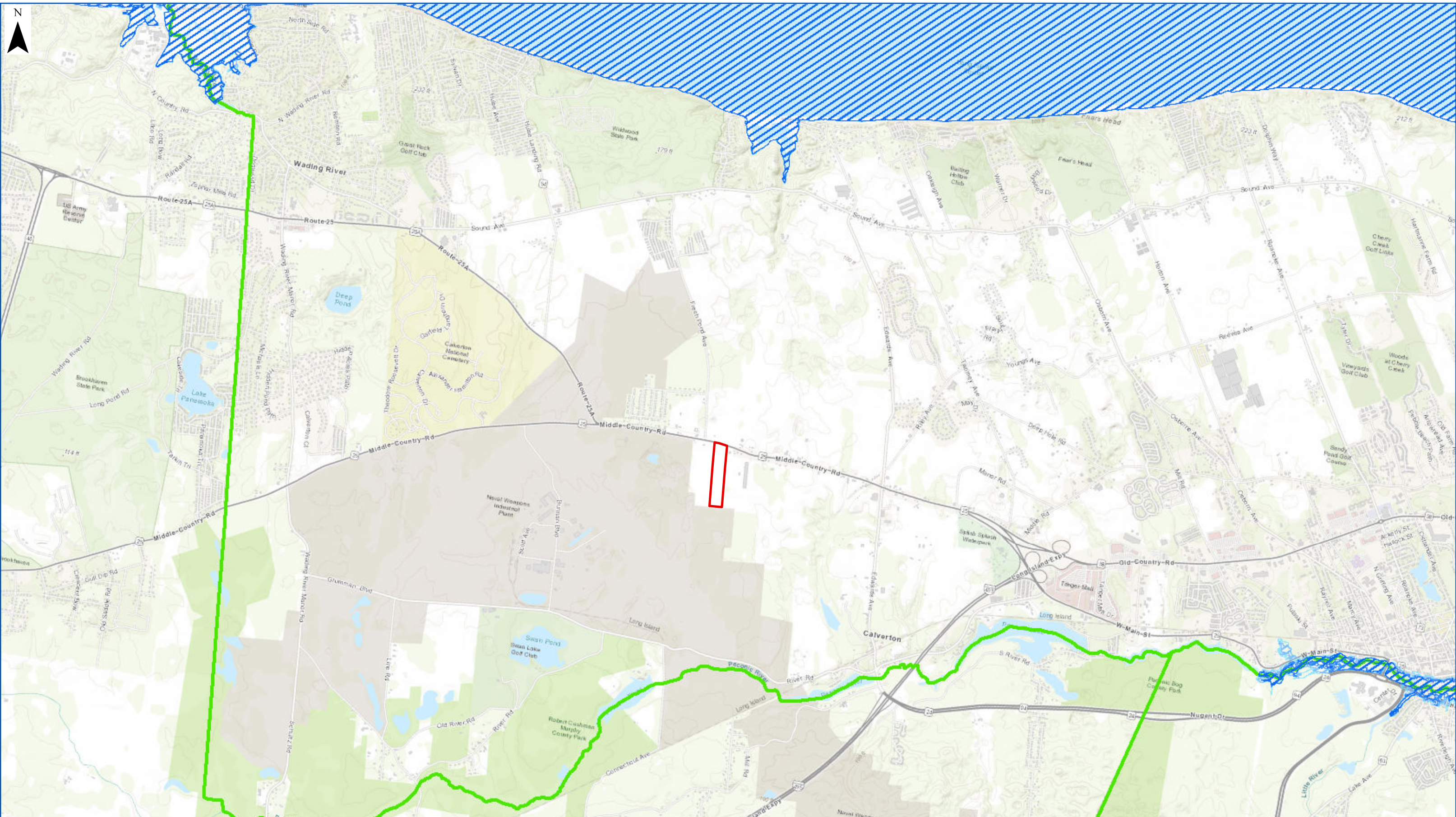
This map image is void if the one or more of the following map elements do not appear: basemap imagery, flood zone labels, legend, scale bar, map creation date, community identifiers, FIRM panel number, and FIRM effective date. Map images for unmapped and unmodernized areas cannot be used for regulatory purposes.

Figure 19 - FEMA Flood Zone Map

4285 Middle Country Rd
Calverton, NY



630 Johnson Ave., Suite 7
Bohemia, NY 11716
Ph: 631-589-6353 • Fax: 631-589-8705
pwgc.info@pwgros.com



Sea Level Rise Scenario

| | | | |
|--|--|--|-----------------------------|
| | Sea Level Rise: 12 inches Recurrence Interval: 100 yrs. | | Today's Floodplain |
| | Sea Level Rise: 24 inches Recurrence Interval: 100 yrs. | | Cities, towns, and villages |
| | Sea Level Rise: 36 inches Recurrence Interval: 100 yrs. | | Site Boundary |

Source: 1. Coastal New York Future Floodplain Mapper GIS Data: https://services.nyseda.ny.gov/SLR_Viewers/About; New York State Energy Research and Development Authority; 2. Suffolk County Tax Parcel Data: NYS GIS Clearinghouse (data provided by Suffolk County).
3. EService Layer Credits: Sources: Esri, HERE, Garmin, Intermap, increment P Corp., GEBCO, USGS, FAO, NPS, NRCAN, GeoBase, IGN, Kadaster NL, Ordnance Survey, Esri Japan, METI, Esri China (Hong Kong), swisstopo, © OpenStreetMap contributors, and the GIS User Community
Boundaries are approximate.

Document Path: W:\Projects\S-Z\TPO\2001\shapes\FIG_SeaLevelRiseMap_v2.mxd

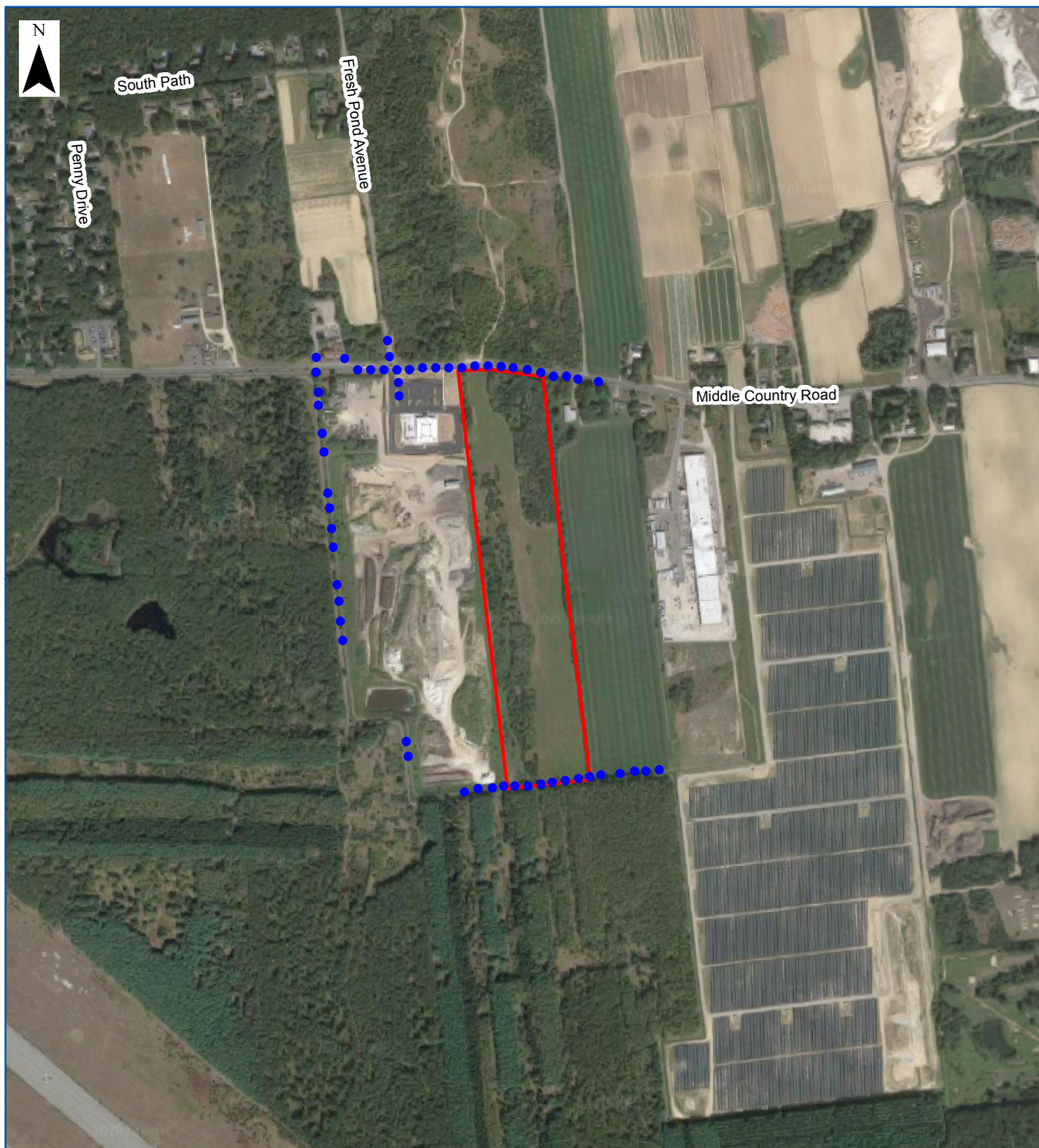
Figure 20 - Sea Level
Rise Map

4285 Middle Country Rd
Calverton, NY

PWGC
CLIENT DRIVEN SOLUTIONS

P.W. Grosser Consulting, Inc.

630 Johnson Ave., Suite 7
Bohemia, NY 11716
Ph: 631-589-6353 • Fax: 631-589-8705
pwgcinfo@pwgros.com



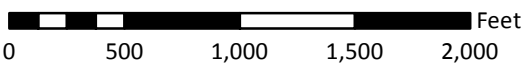
Subject Property Boundary



Public View Points Where Subject Property is Visible
(Based on PWGC Field Inspection on 12/10/2020)

Figure 21 - Publicly Accessible Views Map

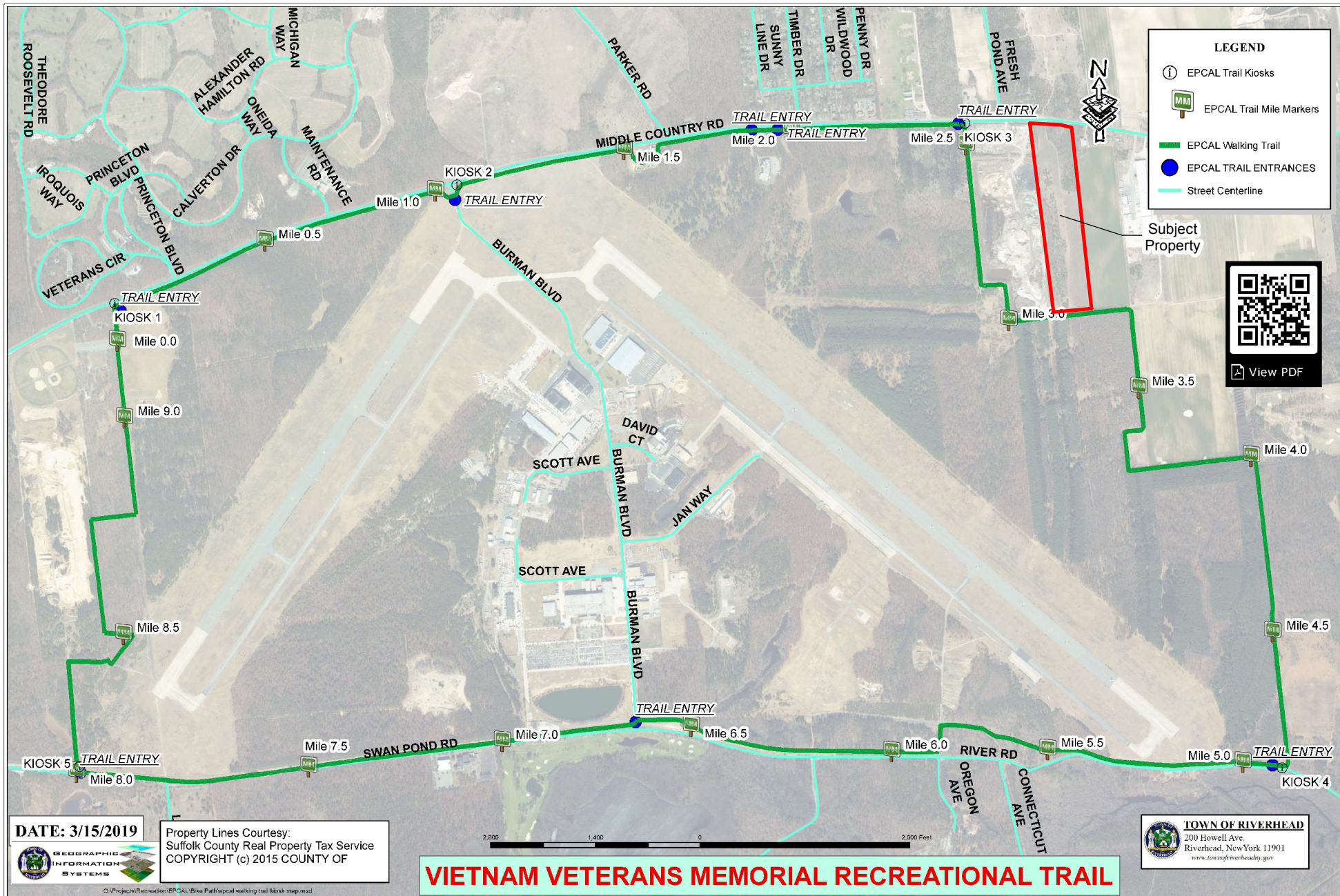
4285 Middle Country Rd
Calverton, NY



Sources: 1. Aerial Imagery: Google Maps (Imagery Date: 9/19/2019). Retrieved on 12/21/2020. 2. Site boundary tax lot data: Suffolk County, NYS GIS Clearinghouse
Boundaries are approximate.

Document Path: W:\Projects\S-Z\TPO\2001\maps\SEQRA\FIG01_SiteLocation.mxd

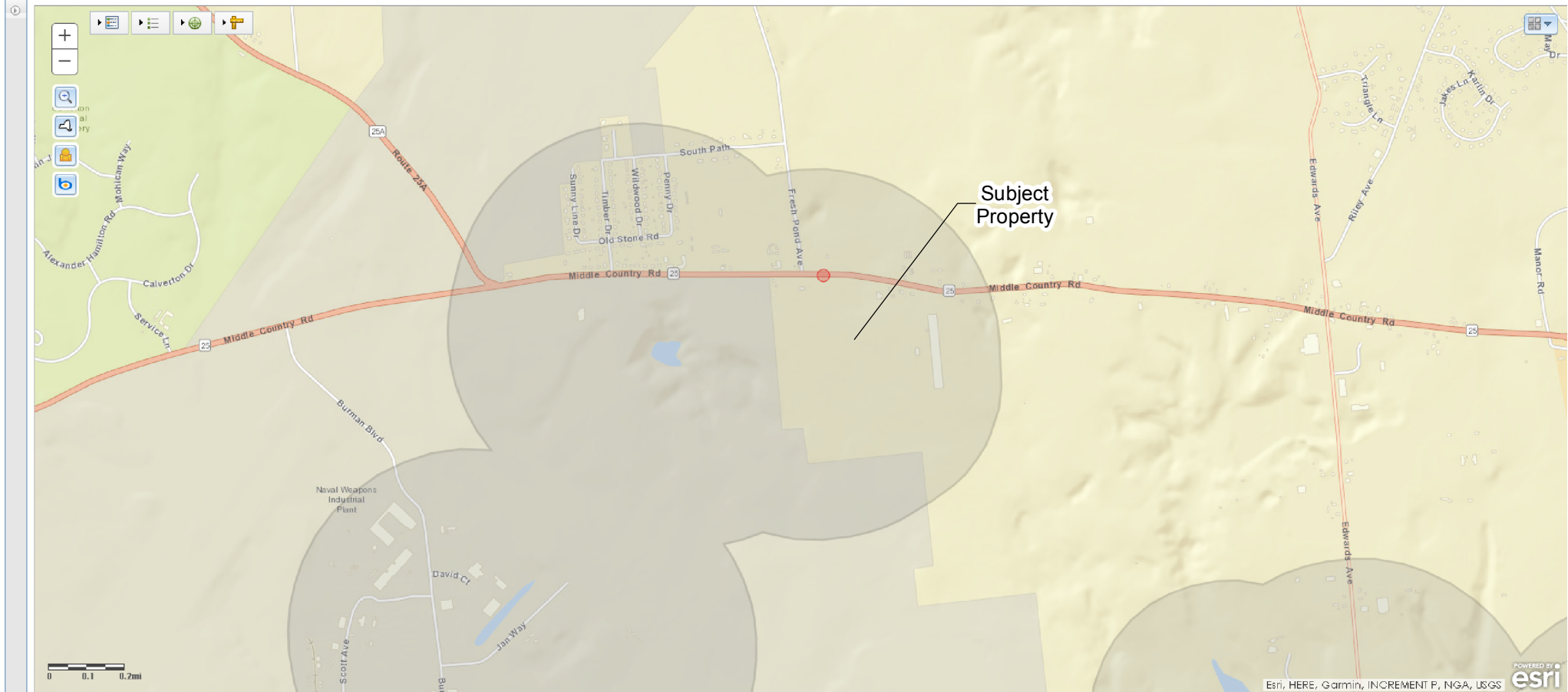




Site Boundary

Figure 22 - EPCAL Walking Trail Map

4285 Middle Country Rd
Calverton, NY

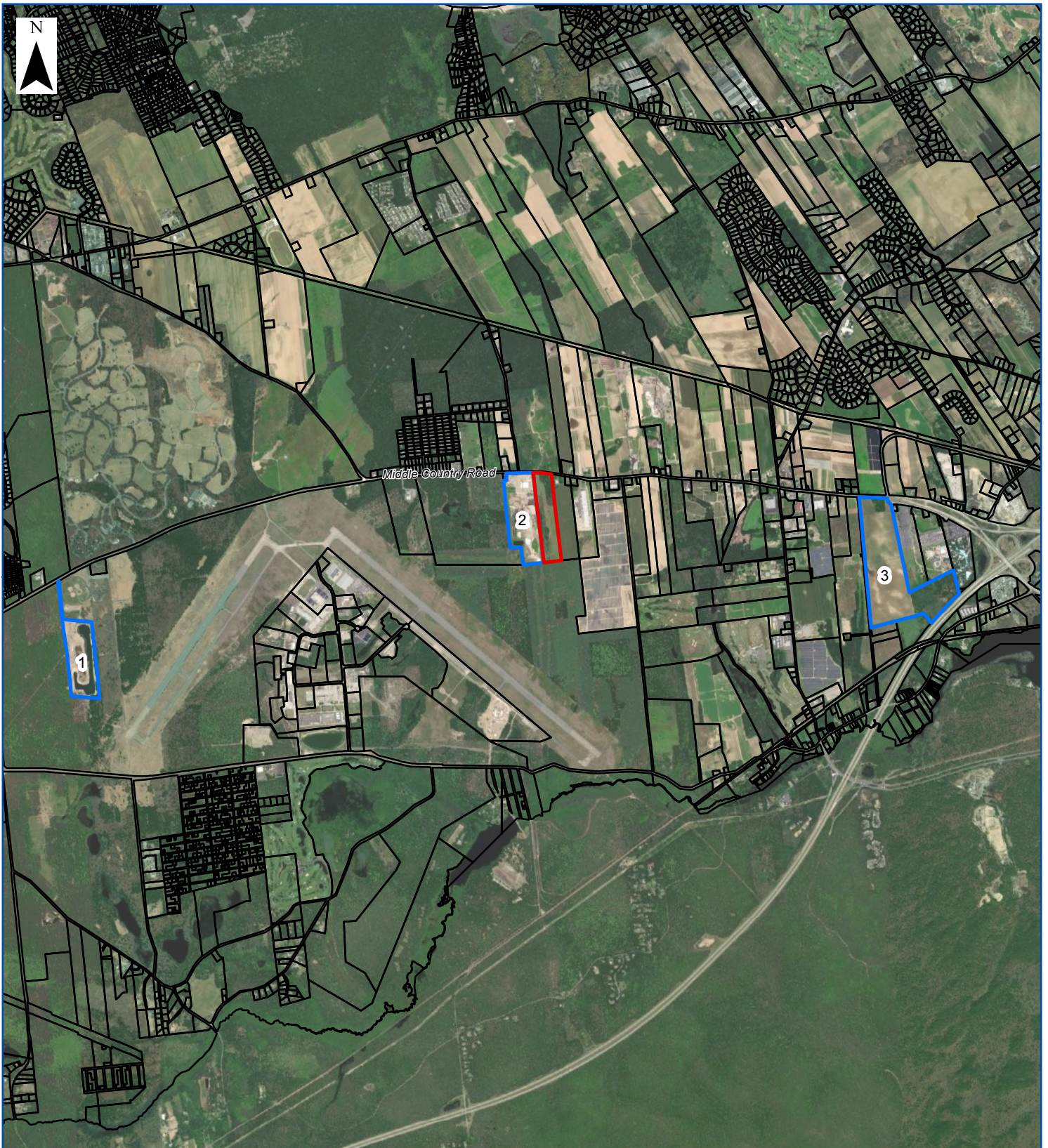


Archeologically Sensitive Areas



Figure 23 - Archaeological Sensitive Areas

4285 Middle Country Rd
Calverton, NY



- | | |
|---|--|
| Other Potential Developments | Site Boundary |
| (1) Island Water Park | Tax Lot Boundary |
| (2) Tractor Supply Site | |
| (3) Calverton Industrial Subdivision (Ostad Riverhead) | |

0 1,900 3,800 5,700 7,600 Feet

Figure 24 - Map of Other Potential Developments

4285 Middle Country Rd
Calverton, NY

Sources: 1. EService Layer Credits: Source: Esri, DigitalGlobe, GeoEye, Earthstar Geographics, CNES/Airbus DS, USDA, USGS, AeroGRID, IGN, and the GIS User Community;
2. Suffolk County Tax Parcel Data: NYS GIS Clearinghouse (data provided by Suffolk County)
Boundaries are approximate.

Document Path: W:\Projects\S-Z\TPO\2001\maps\SEQRA\FIG_OtherPotentialDevelopments.mxd