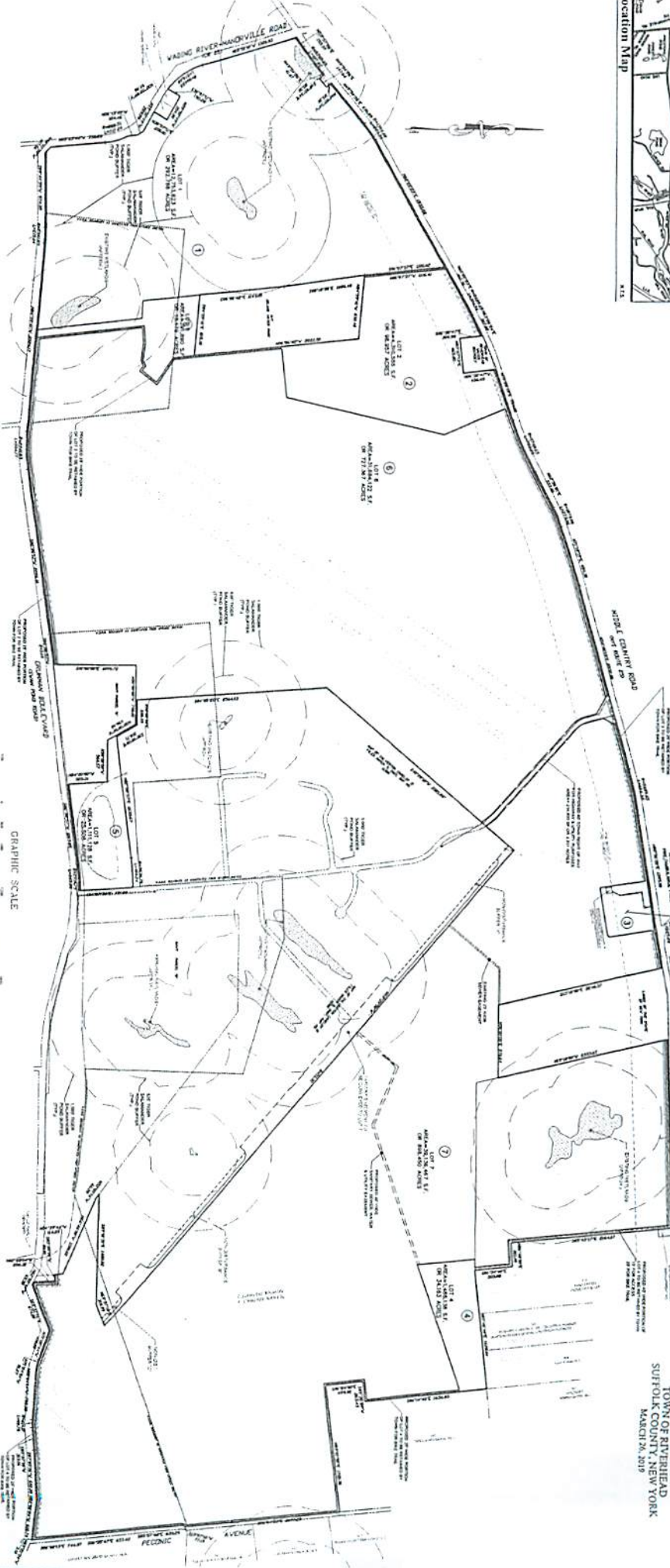


**PRELIMINARY
SUBDIVISION MAP
OF
ENTERPRISE PARK AT CALVERTON
FOR THE TOWN OF RIVERHEAD
THE TOWN OF RIVERHEAD
CALVERTON
TOWN OF RIVERHEAD
SUFFOLK COUNTY, NEW YORK
MARCH 26, 2019**



Legend

	EASEMENT
	PROPOSED BOUNDARY
	SURVEY BOUNDARY
	LOT LINES
	EASEMENT
	UTILITY LINE



- NOTES**
1. MEASUREMENTS ARE IN ACCORDANCE WITH NYS STATUTES.
 2. BOUNDARIES SHOWN ARE IN NEW YORK STATE PLANE COORDINATE SYSTEM LONG ISLAND ZONE.
 3. VERTICAL DATA REFERENCES WADSWORTH.
 4. UNAUTHORIZED ALTERATION OR ADDITION TO SURVEY DATA RESULTS IN A FINE AND PENALTY AS SET FORTH IN SECTION 208 OF THE REAL PROPERTY LAW.
 5. THE LAND SURVEYOR'S RESPONSIBILITY IS TO THE CLIENT AND NOT TO THE PUBLIC. THE SURVEYOR'S RESPONSIBILITY IS TO THE CLIENT AND NOT TO THE PUBLIC.
 6. CERTAIN AREAS INDICATED BY DASHED LINES ON THIS MAP WERE PREVIOUSLY IN A SUBDIVISION MAP AND WERE NOT RECORDED IN THE OFFICE OF THE CLERK OF THE SUPREME COURT. THE SURVEYOR HAS CONDUCTED A VISUAL INSPECTION OF THESE AREAS AND HAS FOUND THEM TO BE CORRECT.
 7. RIGHTS OF WAY NOT SHOWN ARE NOT COVERED.
 8. THE SURVEY QUOTES ARITHMETICALLY.

DATE	BY	DESCRIPTION	APPROVED BY
		REVISIONS	
		Town of Riverhead Suffolk County, New York	

8 LOT SUBDIVISION

L. K. McLEAN ASSOCIATES, P.C.
CONSULTING ENGINEERS & LAND SURVEYORS
437 50 COUNTRY ROAD, BROOKHAVEN, NEW YORK
11793
Phone: 516-754-5997
Fax: 516-754-5998

Approved by: T.S. 1/15

DATE: 03/26/19
BY: T.S.
PROJECT: ENTERPRISE PARK AT CALVERTON
SUFFOLK COUNTY, NEW YORK