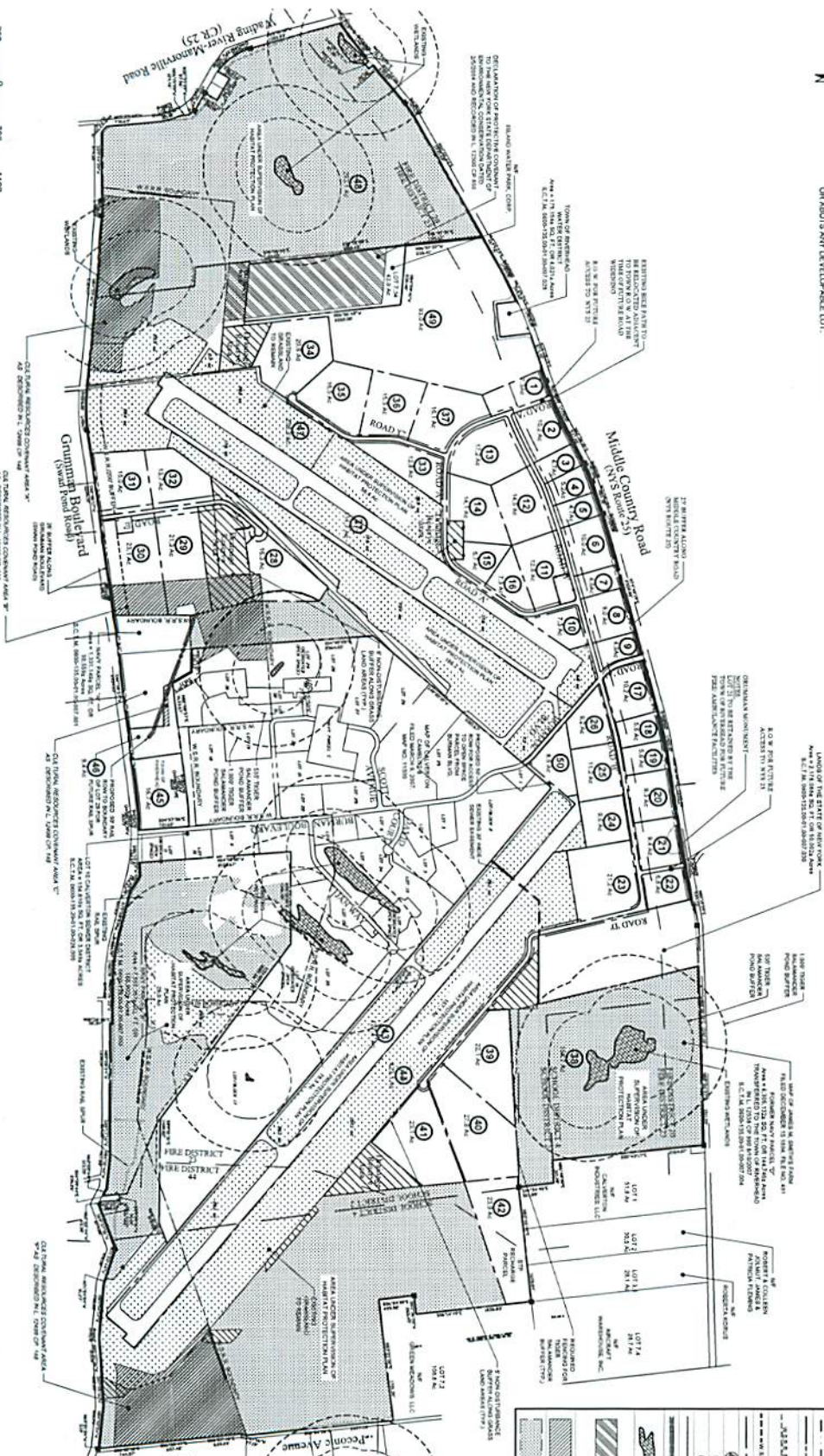




- TOTAL PROPOSED:
1. A 1,000 FOOT NON-ADJACENT BUFFER TO REMAIN NATURAL ALONG ALL DEVELOPABLE LOTS ADJACENT TO EXISTING OR PROPOSED DEVELOPMENT.
 2. A FENCE IS REQUIRED ALONG THE 1,000 FOOT BUFFER SALVAGER BUFFER THAT INTERFERES WITH OR ADJUTS ANY DEVELOPABLE LOT.



Legend	Description
--- (dashed line)	Overall Property Boundary
--- (dotted line)	Fire District Boundary
--- (dash-dot line)	School District Boundary
--- (solid line)	Existing W.S.R.R. Boundary as Announced from NYSDEC Sketch
--- (dashed line)	Proposed W.S.R.R. Boundary
--- (solid line)	Interior Lot Lines
--- (dotted line)	Lot number
--- (solid line)	Existing Monument Locations
--- (dotted line)	Proposed Monument Locations
--- (solid line)	Existing Rail Spur
--- (dotted line)	Future Rail Spur in 5' ROW
--- (solid line)	Wetland Area
--- (dotted line)	Declaration of Protective Covenant to the New York State Department of Environmental Conservation Dated 2/5/2004 and Recorded in 11200 p/850 as described in 112499 of 148
--- (dotted line)	Cultural Resources Consent Area as described in 112499 of 148
--- (dotted line)	Pipe Barrage Car Protection Area and Additional Proposed Area to Remain

TOTAL EXISTING GRASSLAND 648.2 AC
EXISTING GRASSLAND TO REMAIN 512.4 AC
GRASSLAND TO BE CREATED/MAINTAINED 70.0 AC
TOTAL POST-DEVELOPMENT GRASSLAND 583.0 AC

HABITAT PROTECTION PLAN
for
ENTERPRISE PARK
at
CALVERTON

TOWN OF RIVERHEAD
SUFFOLK COUNTY, NEW YORK
February 22, 2016
District 06/00-Section 135 Block 1:
Lots 7.1, 7.2, 7.3 & 7.4

VHB
Engineering, Surveying
& Landscape Architecture, P.C.
Transportation
Land Development
Environmental Services
100 Motor Parkway, Suite 135
Hauppauge, New York 11788
631.787.3400 • FAX 631.813.2445